



# 2014 OKLAHOMA RECYCLING CONFERENCE

*Increasing Diversion:  
Events, Offices, Rural Areas*

Thursday, October 9, 2014  
Nigh Center, UCO, Edmond, OK



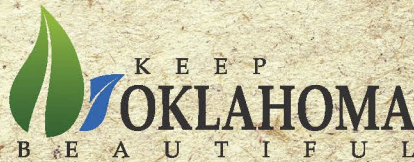
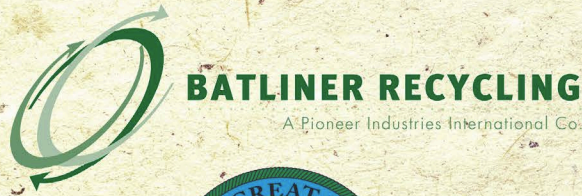
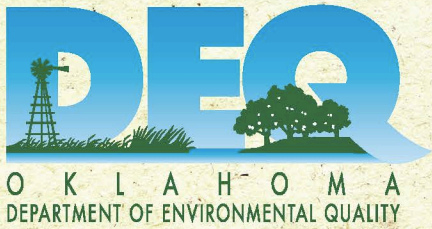


Hosted by:



OKLAHOMA RECYCLING ASSOCIATION

with the generosity of these sponsors:



Natural Evolution, Inc.



An Electronics Recycling Company



BEAUTIFICATION COUNCIL, INC.



## OKRA OFFICERS AND BOARD MEMBERS

President: **Traci Phillips**, Natural Evolution, Inc.

Vice-president: **Tracy Horst\***, Choctaw Nation (Market Development Co-Chair)

Secretary: **Sara Ivey\***, Oklahoma Department of Environmental Quality

Treasurer: **Michael Patton**, The Metropolitan Environmental Trust (Materials Exchange Chair)

Executive Committee Board Member: **Ilda Hershey\***, OSU (Conference & Membership Chair)

Executive Committee Board Member: **Robert Pickens**, Waste Management

**Christine Allison**, Oklahoma Manufacturing Alliance

**Diana Askins**, Tulsa Master Recyclers Association

**Ellen Bussert\***, Bixby, Oklahoma

**Joey Dunlap**, Republic Services (Market Development Co-Chair)

**Chris Feeney**, Keepin' Enid Green Curbside Recycling

**Ian Groshong\***, City of Stillwater (Education Co-Chair)

**Marc Jensen**, OU Lean Institute

**Ambrie Johnson**, Chickasaw Nation

**Kathy Moore**, Oklahoma Composting Council (Composting Chair)

**Patty Overman**, Service Recycling

**Garmon Smith\***, Ada Recycling Coalition

**Larry Wright**, Western Oklahoma

## OKRA ADVISORY COUNCIL MEMBERS (areas of expertise)

**Melissa Adler-McKibben**, Oklahoma Department of Environmental Quality (electronics)

**Jim Bologna**, Ardagh Group (glass / recycling advocacy)

**Wesley Dedmon**, City of Edmond Recycling (curbside)

**Susie Shields Derichsweller**, Oklahoma Green Schools Program (K-12 education)

**David Griesel**, OEMA - Oklahoma Environmental Management Authority (landfill diversion recycling)

**Julie Henry**, American Textile Recycling Services (Education Co-Chair)

**Mike Hixon**, Enogex, a subsidiary of OG&E Energy Corp. (K-12 education)

**Bryce Hulsey**, Oklahoma Department of Environmental Quality (OK recycling vendors / markets)

**Trudi Logan**, Tinker Air Force Base (Newsletter Editor)

**Julie Maher**, Ardmore Beautification Council (community improvement)

**Lynn Malley\***, Oklahoma Cooperative Extension Services (rural integrated solid waste management)

**Melody Martin**, OG&E Energy (business recycling)

**Daniel McCune**, Energy Up (Advocacy Chair)

**Jeanette Nance**, Keep Oklahoma Beautiful (community improvement)

**Trudy Nevland**, City of Ada Recycling (recycling drop-off center / promotion & education)

**Fenton Rood**, Oklahoma Department of Environmental Quality (integrated solid waste management)

**Kristi Shreve**, City of Tulsa (pollution prevention)

**Bruce Stone**, City of the Village (pay-as-you-throw / curbside recycling)

**Tim Tillman**, UCO Sustainability (university programs)

**Lyntha Wesner**, Norman (CORE) Citizens Organized to Recycle our Environment (citizen-driven curbside)

**Dianne Wilkins**, ODEQ Pollution Prevention Program (business / industry waste)

\*OKRA Conference Planning Committee

Visit [www.recycleok.org](http://www.recycleok.org) for OKRA leader e-mail addresses, membership information, news and more!

Open volunteer position: Website & Social Media Chair (write to [info@recycleok.org](mailto:info@recycleok.org))

Like us on Facebook: Oklahoma Recycling Association – OKRA



**Increasing Diversion: Events, Offices, Rural Areas**  
**October 9, 2014 Program Agenda**

TIME	PROGRAM	DETAILS
8:00-3:30	Exhibits Open – Ballroom C	Visit with exhibitors
8:00-9:00	Registration & Networking	Continental breakfast in exhibit area
9:00-9:10	Welcome & Housekeeping Notes	<b>Traci Phillips &amp; Ellen Bussert</b> Oklahoma Recycling Association
9:10-9:45	Oklahoma's 50 Shades of Green	<b>Michael Patton</b> Metropolitan Environmental Trust
9:45-10:45	Moving Forward on National Diversion Rates	<b>Mark Lichtenstein</b> National Recycling Coalition
10:45-11:00	Morning break/network	Exhibit area
11:00-12:15	CONCURRENT SESSION 1 Organics & Compost Panel Moderator: Lynn Malley, OCES	<i>Commercial-scale Composting with Food Waste</i> <b>Jason Huffaker</b> , Minick Materials <i>EPA Food Waste Recovery Challenge</i> <b>Stephen Sturdivant</b> , EPA Region 6 <i>Grassroots Organics Collections</i> <b>Terry Craghead</b> , Fertile Ground
11:00-12:15	CONCURRENT SESSION 2 Office & Large-Scale Recycling Panel Moderator: Fenton Rood, ODEQ	<i>Oklahoma State Agencies &amp; Governments</i> <b>Nicolas Warren</b> , OK Dept. of Central Services <i>The City of Oklahoma City Recycling Program</i> <b>T.O. Bowman</b> , City of OKC <i>Cox Convention Center &amp; Chesapeake Arena</i> <b>Carrie Stewart/David Ellsworth</b> , CCC
12:15-1:45	12:15 Lunch Buffet Opens 12:45 Program Begins: Cooperative Infrastructure & Marketing for Rural Areas	<b>Rachel Hering</b> CTRA - Cooperative Teamwork & Recycling Assistance
1:45-2:00	Exhibits – Ballroom C	Visit exhibits & network while tables are cleared
2:00-3:00	Event Recycling Panel Moderator: Tracy Horst, Choctaw Nation	<i>Special Event Bin Loan Program</i> <b>Jeanette Nance</b> , Keep Oklahoma Beautiful <i>Managing an Army of Volunteers</i> <b>Matt Albright</b> , Tulsa Master Recyclers <i>Woody Guthrie &amp; OKC Arts Festival</i> <b>Kelly Dillow</b> , ODEQ Land Protection Division
3:00-3:30	Expert Q&A Wrap-Up Moderators: Traci Phillips, Natural Evolution, Inc. Robert Pickens, American Waste Control	<b>Melissa Adler-McKibben</b> (e-waste) <b>Rachel Hering</b> (rural challenges) <b>Jason Huffaker</b> (composting) <b>Mark Lichtenstein</b> (national trends) <b>Fenton Rood</b> (integrated SWM) <b>Tim Tillman</b> (college campuses)
3:30-5:00	CONCURRENT TOUR 1 University of Central Oklahoma Tour Leader: Tim Tillman, UCO	Meet outside ballroom for tour of University of Central Oklahoma's campus recycling program and waste management initiatives
3:30-5:00	CONCURRENT TOUR 2 Minick Compost Facility Tour Leader: Jason Huffaker, Minick	Meet outside ballroom to caravan to Minick Materials in Edmond for tour of a commercial-scale compost facility (14141 N. Santa Fe Ave.)



## CONFERENCE PRESENTERS

**Melissa Adler-McKibben**, Electronics Recycling, Oklahoma Department of Environmental Quality, [www.deq.state.ok.us](http://www.deq.state.ok.us), [melissa.adler-mckibben@deq.ok.gov](mailto:melissa.adler-mckibben@deq.ok.gov)

**Matt Albright**, Tulsa Master Recyclers Association, [www.tulsamasterrecyclers.org](http://www.tulsamasterrecyclers.org), [albrightmc1@msn.com](mailto:albrightmc1@msn.com)

**T.O. Bowman**, Office of Sustainability, City of Oklahoma City, [www.okc.gov/sustain](http://www.okc.gov/sustain), [thomas.bowman@okc.gov](mailto:thomas.bowman@okc.gov)

**Ellen Bussert**, Board Member, Oklahoma Recycling Association, [www.recycle.ok.org](http://www.recycle.ok.org), [ellen.bussert@aol.com](mailto:ellen.bussert@aol.com)

**Terry Craghead**, Owner, Fertile Ground Cooperative, [www.fertilegroundokc.com](http://www.fertilegroundokc.com), [terry@fertilegroundOKC.com](mailto:terry@fertilegroundOKC.com)

**Kelly Dillow**, Land Protection Division, Oklahoma Department of Environmental Quality, [www.deq.state.ok.us](http://www.deq.state.ok.us), [kelly.dillow@deq.ok.gov](mailto:kelly.dillow@deq.ok.gov)

**David Ellsworth**, Director of Operations, Cox Convention Center & Chesapeake Arena, [www.coxconventioncenter.com](http://www.coxconventioncenter.com), [dellsworth@coxconventioncenter.com](mailto:dellsworth@coxconventioncenter.com)

**Rachel Hering**, Executive Director, CTRA - Cooperative Teamwork & Recycling, [www.recyclingassistance.org](http://www.recyclingassistance.org), [recycletrachel@gmail.com](mailto:recycletrachel@gmail.com)

**Tracy Horst**, Director of Environmental Sustainability, Choctaw Nation, [www.choctawnation.com](http://www.choctawnation.com), [thorst@choctawnation.com](mailto:thorst@choctawnation.com)

**Jason Huffaker**, Operations Manager, Minick Materials, [www.minickmaterials.com](http://www.minickmaterials.com), [jhuffaker@minickmaterials.com](mailto:jhuffaker@minickmaterials.com)

**Mark Lichtenstein**, President, National Recycling Coalition, [www.nrcrecycles.org](http://www.nrcrecycles.org), [malichte@me.com](mailto:malichte@me.com)

**Lynn Malley**, Assistant State Extension Specialist of Solid Waste Management Programs, OSU-Oklahoma Cooperative Extension Service, [www.oces.okstate.edu](http://www.oces.okstate.edu), [lynn.malley@okstate.edu](mailto:lynn.malley@okstate.edu)

**Jeanette Nance**, Executive Director, Keep Oklahoma Beautiful, [www.keepoklahomabeautiful.com](http://www.keepoklahomabeautiful.com), [jeanette@keepoklahomabeautiful.com](mailto:jeanette@keepoklahomabeautiful.com)

**Michael Patton**, Executive Director, Metropolitan Environmental Trust, [www.metrecycle.com](http://www.metrecycle.com), [recyclemichael@yahoo.com](mailto:recyclemichael@yahoo.com)

**Traci Phillips**, President, Natural Evolution, Inc., [www.naturalevolution.com](http://www.naturalevolution.com), [tphillips@naturalevolution.com](mailto:tphillips@naturalevolution.com)

**Robert Pickens**, Tulsa Recycle & Transfer, Inc., [www.FeedMrMurph.com](http://www.FeedMrMurph.com), [Robert@awcok.com](mailto:Robert@awcok.com)

**Fenton Rood**, Manager Solid Waste Programs, Land Protection Division, Oklahoma Department of Environmental Quality, [www.deq.state.ok.us](http://www.deq.state.ok.us), [fenton.rood@deq.ok.gov](mailto:fenton.rood@deq.ok.gov)

**Carrie Stewart**, Director of Event Services, Cox Convention Center & Chesapeake Arena, [www.coxconventioncenter.com](http://www.coxconventioncenter.com), [cstewart@coxconventioncenter.com](mailto:cstewart@coxconventioncenter.com)

**Stephen Sturdivant**, Sustainable Materials Management, EPA Region 6, [www.epa.gov/smm](http://www.epa.gov/smm), [sturdivant.stephen@epa.gov](mailto:sturdivant.stephen@epa.gov)

**Tim Tillman**, Sustainability Coordinator, University of Central Oklahoma, [www.uco.edu/administration/green](http://www.uco.edu/administration/green), [ttillman2@uco.edu](mailto:ttillman2@uco.edu)

**Nicolas Warren**, Oklahoma Dept. of Central Services, [www.ok.gov/DCS/State\\_Surplus/Recycling\\_Materials\\_Program](http://www.ok.gov/DCS/State_Surplus/Recycling_Materials_Program), [Nicholas.Warren@omes.ok.gov](mailto:Nicholas.Warren@omes.ok.gov)

## KEYNOTE SPEAKERS



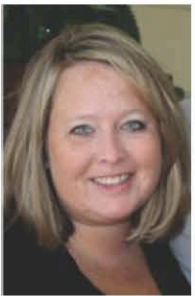
### MARK LICHTENSTEIN

National Recycling Coalition  
1220 L St NW, Suite 100-155,  
Washington, DC 20005  
202-618-2107  
malichte@me.com  
www.nrcrecycles.org

**Mark Lichtenstein**, who has nearly 30 years of experience in the sustainability field, is serving a seventh term as president and CEO of the National Recycling Coalition, Inc.

He is executive director of the Center for Sustainable Community Solutions and the Environmental Finance Center (EFC), both at Syracuse University. He is also a faculty associate in the Program for the Advancement of Research on Conflict and Collaboration at Syracuse's Maxwell School and a Visiting Scholar at the State University of New York, College of Environmental Science and Forestry in Syracuse.

Mark has a Master of Arts in Public Administration and a Graduate Certificate of Advanced Studies in Conflict Resolution from the Maxwell School. He also has graduate training in Environmental Science and holds a Bachelor of Science in Environmental Studies, both from the College of Environmental Science and Forestry.



### RACHEL HERING

CTRA - Cooperative Teamwork & Recycling  
3355 Bee Cave Rd. Suite 304  
Austin, TX 78746  
512-236-1134  
recycletrachel@gmail.com  
www.recyclingassistance.org

**Rachel Hering** received her BA in Geography, with a minor in Environmental Science from the University of Oklahoma. After graduation she returned to her home state to work for the Texas Commission on Environmental Quality (TCEQ) in the Small Business and Environmental Assistance Division. Her experiences there lead her to the Texas Urban Forestry Council where she was Director of Operations and Administration.

In 2006, she started with the Recycling Alliance of Texas (now STAR) and Cooperative Teamwork & Recycling Assistance (CTRA) as the Operations Manager for both organizations before taking on the role as Executive Director for CTRA in 2008.

She currently serves on the City of Austin's Zero Waste Advisory Commission and the National Parks Conservation Association's Texas Leadership Council. Rachel is also a member of the State of Texas Alliance for Recycling and the Solid Waste Association of North America.

## CONFERENCE SPONSORS

### *Platinum:*

University of Central Oklahoma, [www.uco.edu](http://www.uco.edu)

### *Gold:*

Oklahoma Department of Environmental Quality, [www.deq.state.ok.us](http://www.deq.state.ok.us)  
Oklahoma State University Physical Plant Services, [www.physicalplant.okstate.edu](http://www.physicalplant.okstate.edu)

### *Silver:*

Batliner Recycling, [www.pioneerintl.com](http://www.pioneerintl.com)  
Republic Services, [www.republicservices.com](http://www.republicservices.com)

### *Bronze:*

Choctaw Nation, [www.choctawnation.com](http://www.choctawnation.com)  
City of Stillwater, [www.stillwater.org](http://www.stillwater.org)  
Covanta Energy, [www.covanta.com](http://www.covanta.com)  
Keep Oklahoma Beautiful, [www.keepoklahomabeautiful.org](http://www.keepoklahomabeautiful.org)  
OGE Energy Corp., [www.oge.com](http://www.oge.com)  
SWANA Oklahoma Indian Nations Chapter, [www.swana.org](http://www.swana.org)

### *Copper:*

Ardmore Beautification Council, [www.forabc.org](http://www.forabc.org)  
Natural Evolution, Inc., [www.naturalevolution.com](http://www.naturalevolution.com)



Please complete the conference evaluation form online:

[www.surveymonkey.com/s/OKRA-2014](http://www.surveymonkey.com/s/OKRA-2014)

We appreciate your feedback!

CONFERENCE EXHIBITORS





**Batliner Recycling** (recycling collection & processing) - Casey Moore, Oklahoma Sales Representative, [www.pioneerintl.com](http://www.pioneerintl.com), [cmoore@pioneerintl.com](mailto:cmoore@pioneerintl.com)

**Choctaw Nation** (tribal recycling program) - Tracy Horst, Director of Environmental Sustainability, [www.choctawnation.com](http://www.choctawnation.com), [thorst@choctawnation.com](mailto:thorst@choctawnation.com)

**Closed Loop Recycling** - Michael Trojahn, Sales Manager, [www.reccylemats.com](http://www.reccylemats.com), [michael.trojahn@recyclemats.com](mailto:michael.trojahn@recyclemats.com)

**Closer to Earth Youth Gardens** (small-scale composting) - Allen Parleir, Founder, [www.closetoearth.org](http://www.closetoearth.org), [parleir@cox.net](mailto:parleir@cox.net)

**Cram-A-Lot / J.V. Manufacturing** (manufacturer of solid waste & recycling equipment) - Eddie Lamb, Regional Sales Manager, [www.cram-a-lot.com](http://www.cram-a-lot.com), [elamb@jv.com](mailto:elamb@jv.com)

**Foam Equipment & Consulting, Co.** (expanded plastic foam compacting machines) - Phil Plotts, President, [www.foamequipment.com](http://www.foamequipment.com), [pplotts@foamequipment.com](mailto:pplotts@foamequipment.com)

**Keep Oklahoma Beautiful** (community improvement) - Megan Moran, Projects Coordinator, [www.keepoklahomabeautiful.com](http://www.keepoklahomabeautiful.com), [jordan@keepoklahomabeautiful.com](mailto:jordan@keepoklahomabeautiful.com)

**Natural Evolution, Inc.** (electronics recycling) - Traci Phillips, President, [www.naturalevolution.com](http://www.naturalevolution.com), [tphillips@naturalevolution.com](mailto:tphillips@naturalevolution.com)

**Oklahoma Dept. of Environmental Quality** (tire recycling program) - Kole Kennedy, Waste Tires, [www.deq.state.ok.us](http://www.deq.state.ok.us), [kole.kennedy@deq.ok.gov](mailto:kole.kennedy@deq.ok.gov)

**Oklahoma Recycling Association** (networking forum in support of recycling) - Ian Groshong, OKRA Board Member, [www.recycleok.org](http://www.recycleok.org), [info@recycleok.org](mailto:info@recycleok.org)

**Republic Services** (residential & commercial recycling & waste collections) - Joey Dunlap, Municipal Services Manager, [www.republicservices.com](http://www.republicservices.com), [jdunlap@republicservices.com](mailto:jdunlap@republicservices.com)

**Service Recycling** (wood pallets, cardboard, paper & plastics recycling) - Jason Stark, Account Manager, [www.servicerecycling.net](http://www.servicerecycling.net), [j.stark@servicerecycling.net](mailto:j.stark@servicerecycling.net)

## NOTES

---

---

---

---

---

---

